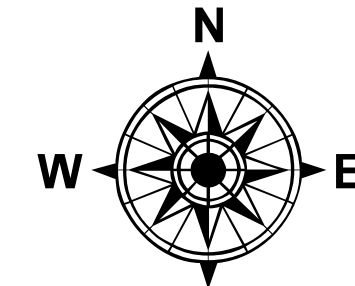


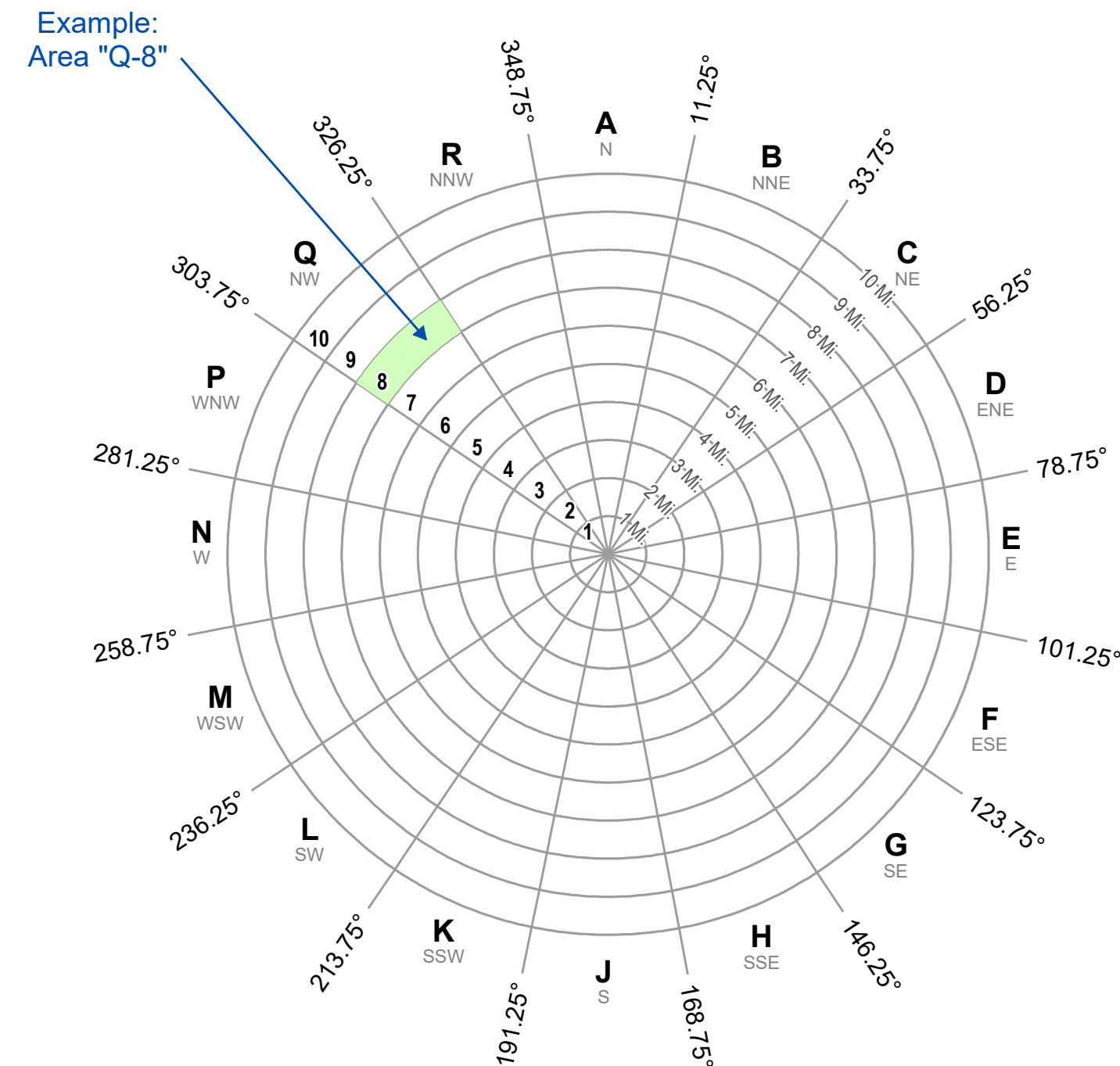
# Monticello Nuclear Generating Plant

## Evacuation Routes

January, 2024



- ★ Monticello Nuclear Generating Plant
- Northstar Commuter Rail Station
- ▲ Reception Center
- Ⓜ Emergency Operations Center
- Ⓜ Dispatch Center
- Sector Line
- Northstar Commuter Rail
- Evacuation Route
- Sub-Area



Sub-Area	Residents: Sherburne Co	Residents: Wright Co	Transients	Employees	Total Population
2	3,141	0	100	186	3,427
5N	9,657	0	480	186	10,323
5E	19,760	0	34	0	19,794
5S	0	15,339	430	190	15,959
5W	0	2,777	711	0	3,488
10N	699	0	0	0	699
10E	2,979	0	204	0	3,183
10SE	0	3,978	155	0	4,133
10S	0	8,109	0	0	8,109
10SW	0	3,955	0	0	3,955
10W	0	3,789	138	0	3,927
10NW	1,196	0	178	0	1,374
<b>TOTALS</b>	<b>75,379</b>	<b>2,430</b>	<b>562</b>	<b>0</b>	<b>78,371</b>

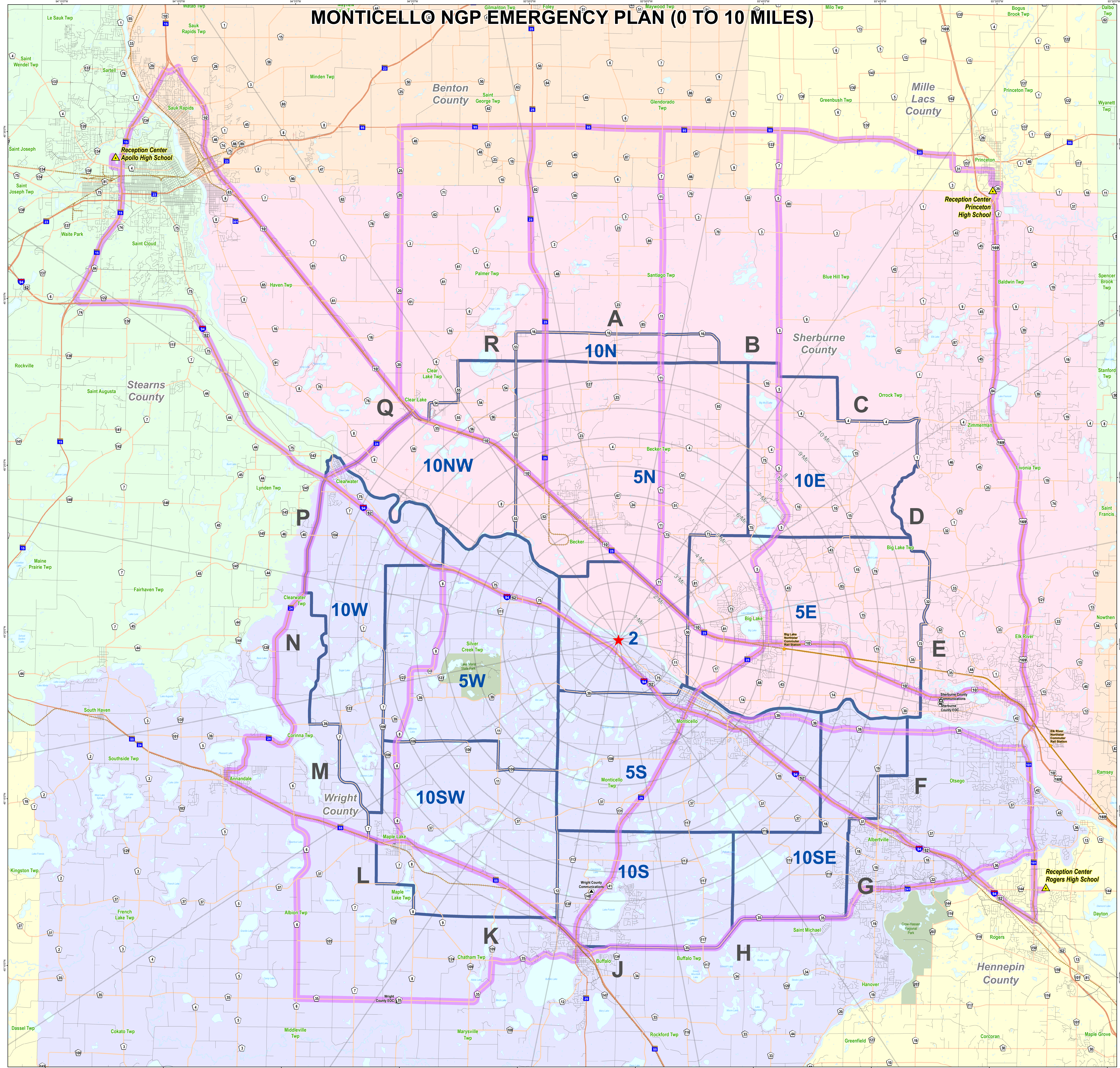
Population estimates are from the Evacuation Time Estimate Study for the Monticello Nuclear Generating Plant EPZ, 2022 (Based on 2020 Census data). Additional information is available in this report.  
 \*The population at the Wright County Jail is included in the U.S. Census permanent resident population. For the purposes of this table, those 155 inmates are included with the Special Facility population.



Minnesota Department of Public Safety  
 Division of Homeland Security and Emergency Management  
 The map and information depicted on this page represents information pertaining to the area around the Monticello Nuclear Generating Plant. This map is produced as a tool to assist employees in the performance of their jobs. Your personal safety is provided for by using safety practices, procedures and equipment as described in safety training programs, manuals and Protective Action Recommendations.

Map File: M\_EvacuationRoutes.mxd  
 Map Scale: 12048' per inch: 1:60,000  
 UTM15N Meters NAD83

# MONTICELLO NGP EMERGENCY PLAN (0 TO 10 MILES)



MNGP - Evacuation routes