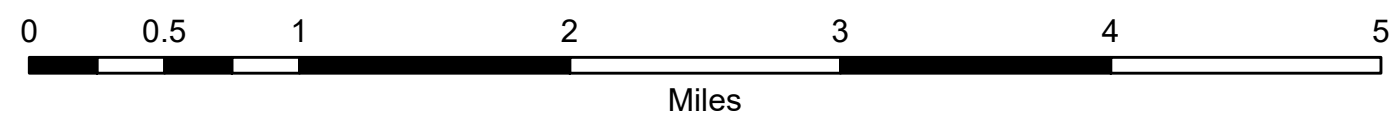
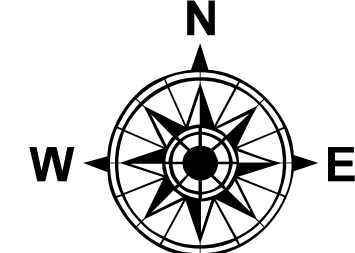


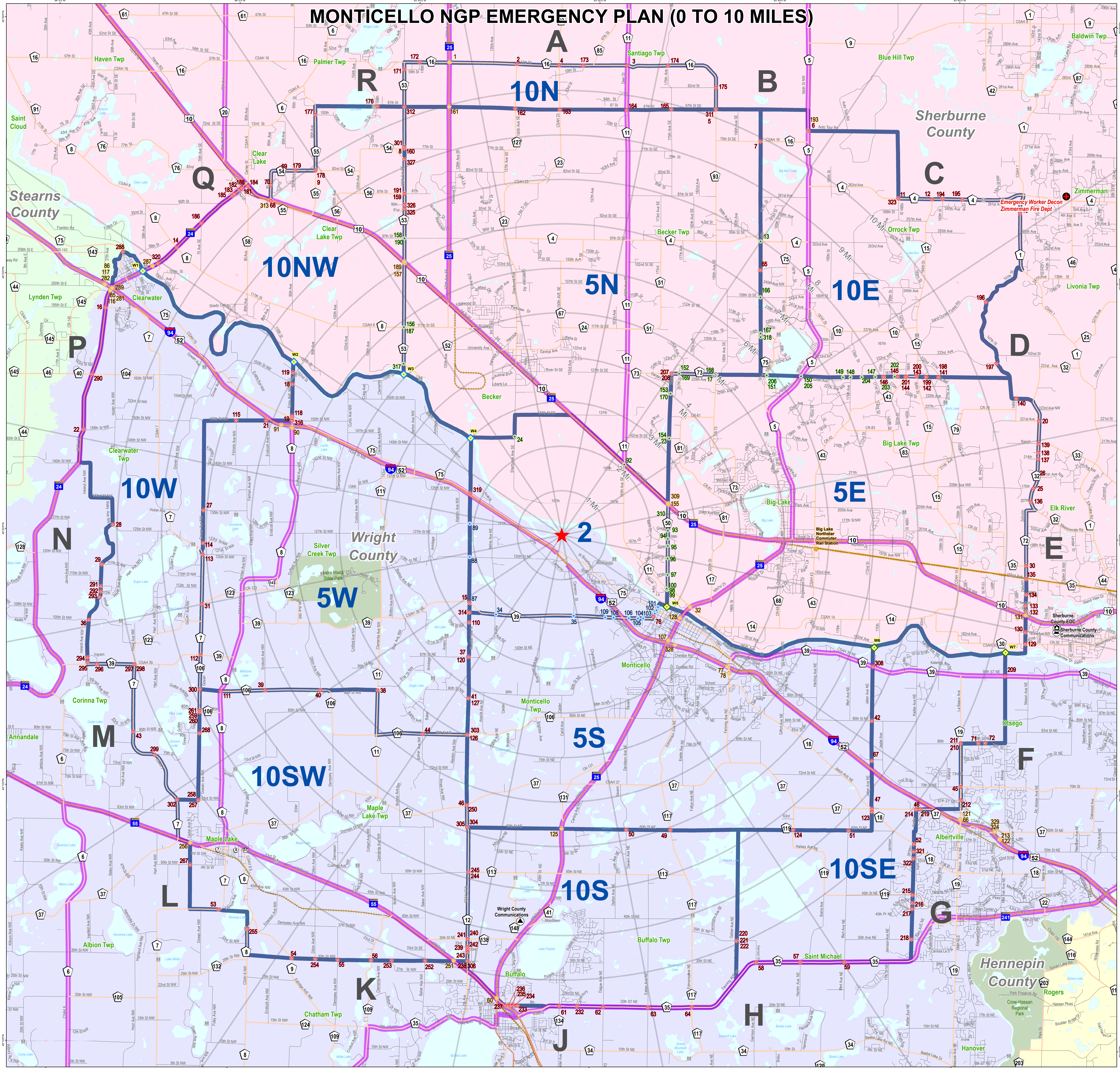
# Monticello Nuclear Generating Plant Traffic and Access Control Points January, 2024



- ★ Monticello Nuclear Generating Plant
  - Emergency Worker Decon Site
  - Ⓜ Emergency Operations Center
  - Ⓜ Dispatch Center
  - Northstar Commuter Rail Station
  - Public Boat Launch
  - Sector / Zone Line
  - Northstar Commuter Rail
  - Evacuation Route
  - Sub-Area
- Traffic and Access Control Staffing**
- Road**
- State Patrol (State, US, Interstate Hwys) TOTAL: 35
  - State Patrol (County, Municipal Rds) TOTAL: 194
  - Sherburne County Sheriff TOTAL: 38
  - Wright County Sheriff TOTAL: 13
- Water**
- ◇ Sherburne County Sheriff TOTAL: 3
  - ◇ Wright County Sheriff TOTAL: 4

**Maximum # of TACPs by Staffing Agency**

Staffing Agency	Sub-Area 2 only	Sub-Area 2 plus one or more 5-mile sub-areas	Sub-Area 2 plus one or more 10-mile sub-areas
Minnesota State Patrol	7	67	129
Sherburne County Sheriff	10	19	19
Wright County Sheriff	13	13	13



Minnesota Department of Public Safety  
Division of Homeland Security and Emergency Management

This map and information depicted on this page represents information pertaining to the area around the Monticello Nuclear Generating Plant. This map is produced as a tool to assist employees in the performance of their jobs. Your personal safety is provided for by using safety practices, procedures and equipment as described in safety training programs, manuals and Protective Action Recommendations.

Map File: M\_TrafficAndAccessControlPoints.mxd  
Map Scale: 800' = 1" (400' = 1")  
UTM15N Meers NAD83