

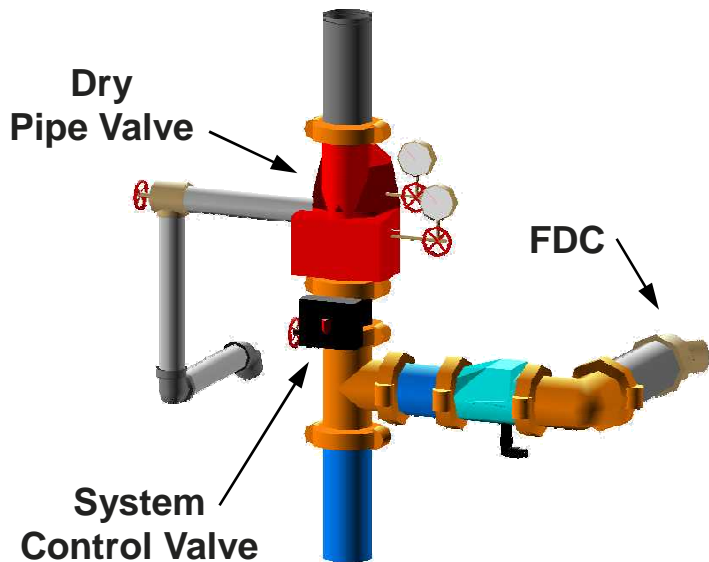


QUICK RESPONSE

Saving life and property through effective licensing, plan review, and inspection of fire protection systems.

February 2010

DRY PIPE VALVE – CONTROL VALVE LOCATION



Section 8016.2.4.2(2) of the 2002 edition of NFPA 13 requires the fire department connection (FDC) piping to be installed between the system control valve and the dry pipe valve. Also, Section 8.16.2.5.2 does not permit a **control valve** in the FDC piping. A **control valve** in the FDC piping serves no useful purpose and only provides a point of potential system failure. The picture to the left illustrates the **control valve** improperly located between the dry pipe valve and the FDC piping. The proper location of the **control valve** would be below the FDC piping.

However, for multiple systems, Section 8.16.2.4.3 requires the fire department connection piping to be installed between the **supply control valve** and the **system control valves**. The picture to the right illustrates the dry system **control valve** properly located between the dry pipe valve and the FDC piping.

