



# QUICK RESPONSE

*Saving life and property through effective licensing, plan review, and inspection of fire protection systems.*

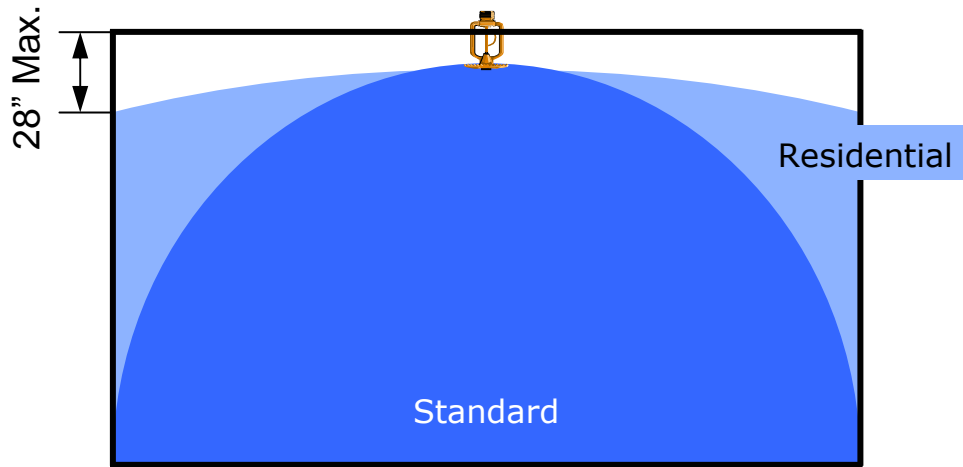
August 2009

## SPRINKLER DISCHARGE PATTERNS – RESIDENTIAL SPRINKLERS

Residential sprinklers have a different **discharge pattern** than standard spray sprinklers. They are required to throw water to wet walls within 28 inches of the ceiling.

Introduced in the 1980s, residential sprinklers objective is to achieve life safety in dwelling units. Generally the fuel loading in dwelling units is located near walls. As such, the **discharge patterns** of residential sprinklers have the wall wetting requirement.

Figures 1 and 2 demonstrate the different **discharge patterns** between standard spray and residential sprinklers.



Residential Sprinkler Wall Wetting Requirement

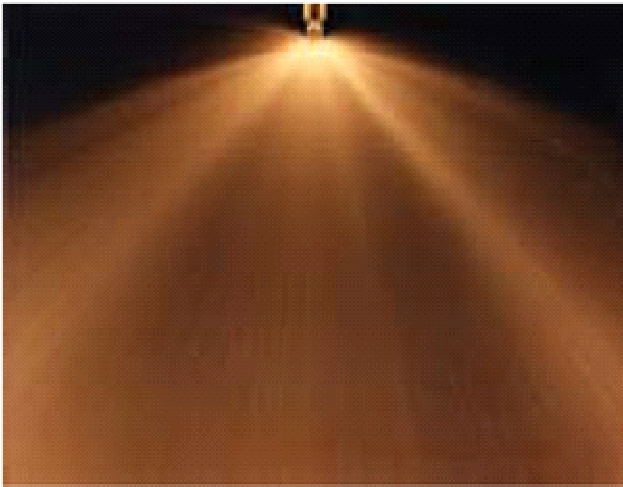


Fig. 1 Standard Spray Pendent Sprinkler

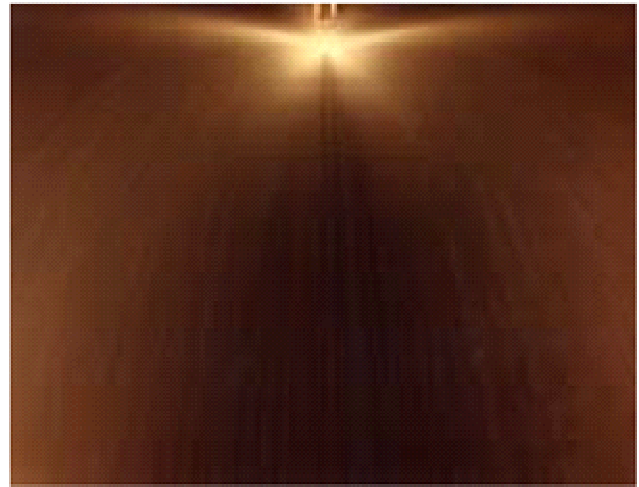


Fig. 2 Residential Pendent Sprinkler

*Quick Response* is presented monthly by the  
Minnesota State Fire Marshal – Fire Protection Section

[www.fire.state.mn.us](http://www.fire.state.mn.us)