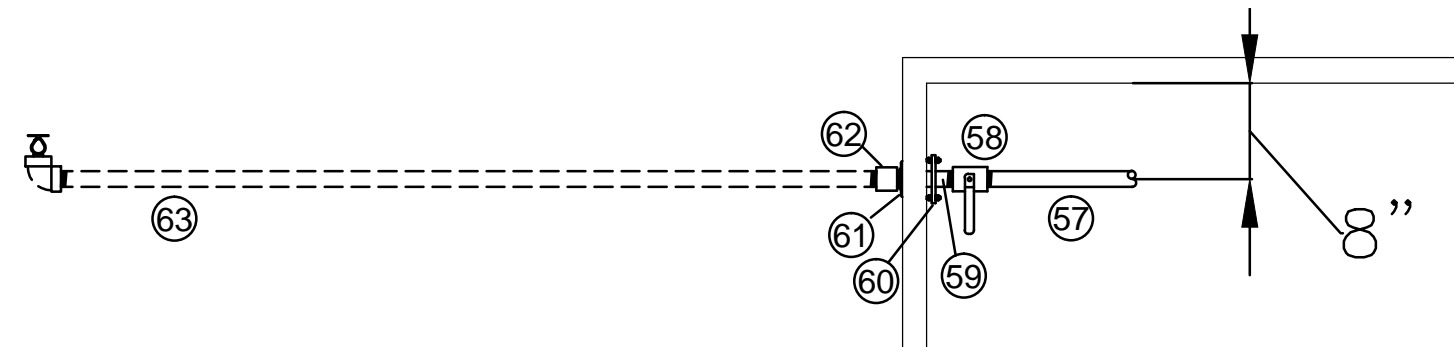
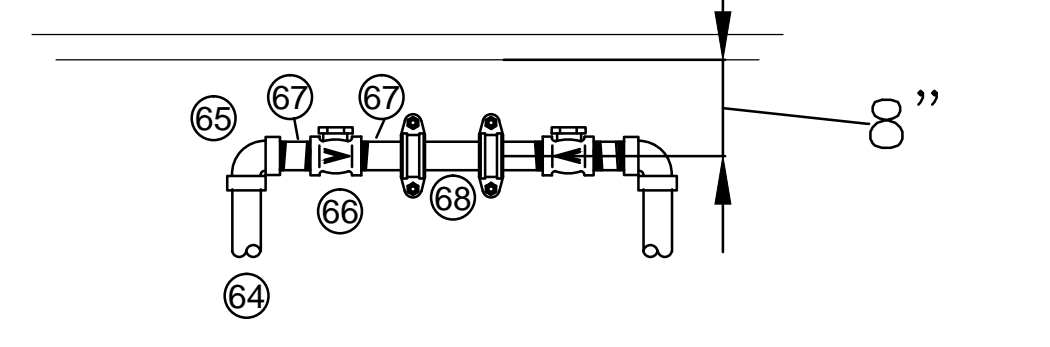


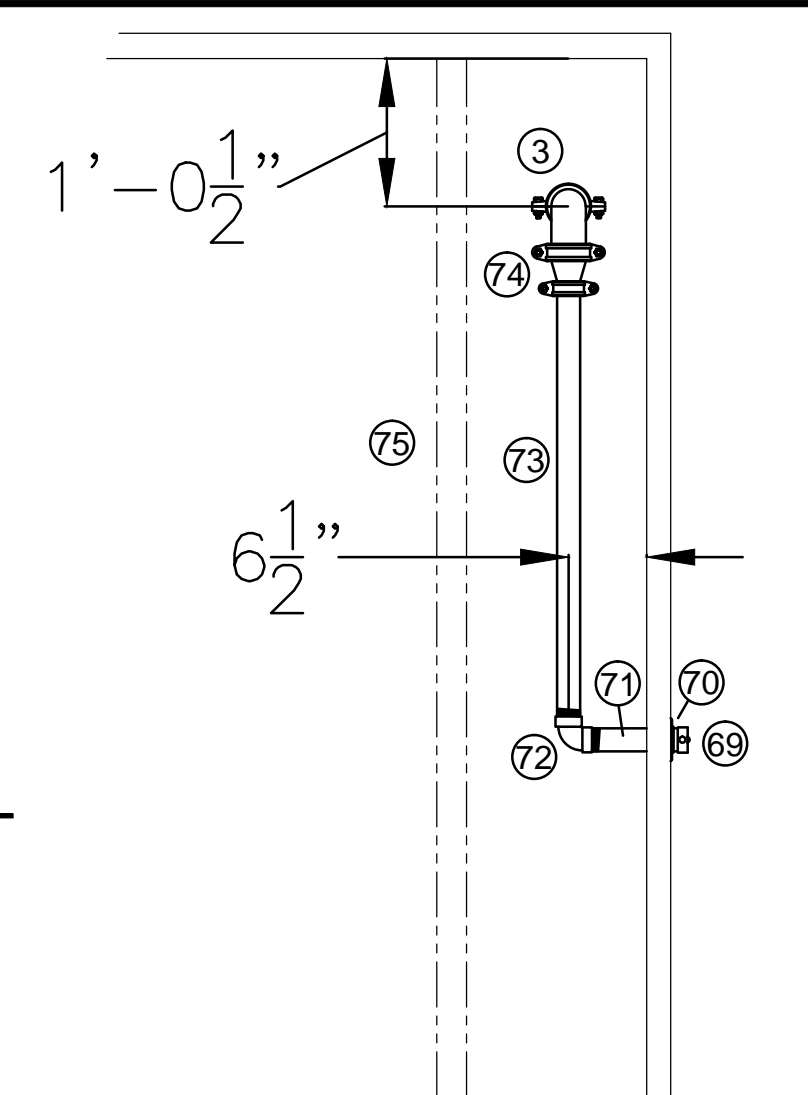
1 DRIVER SIDE ELEVATION
1/2" = 1'-0"



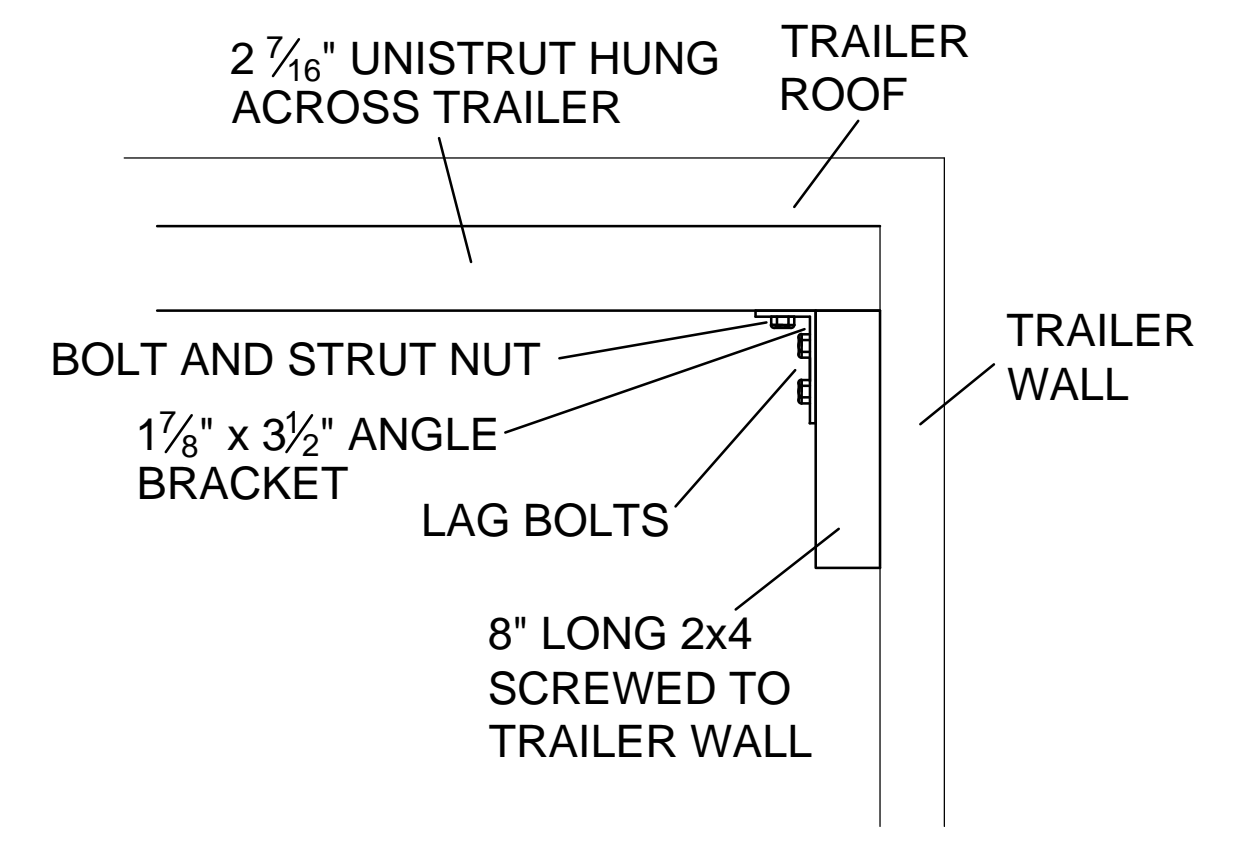
2 NOSE PIPING DETAIL
3/4" = 1'-0"



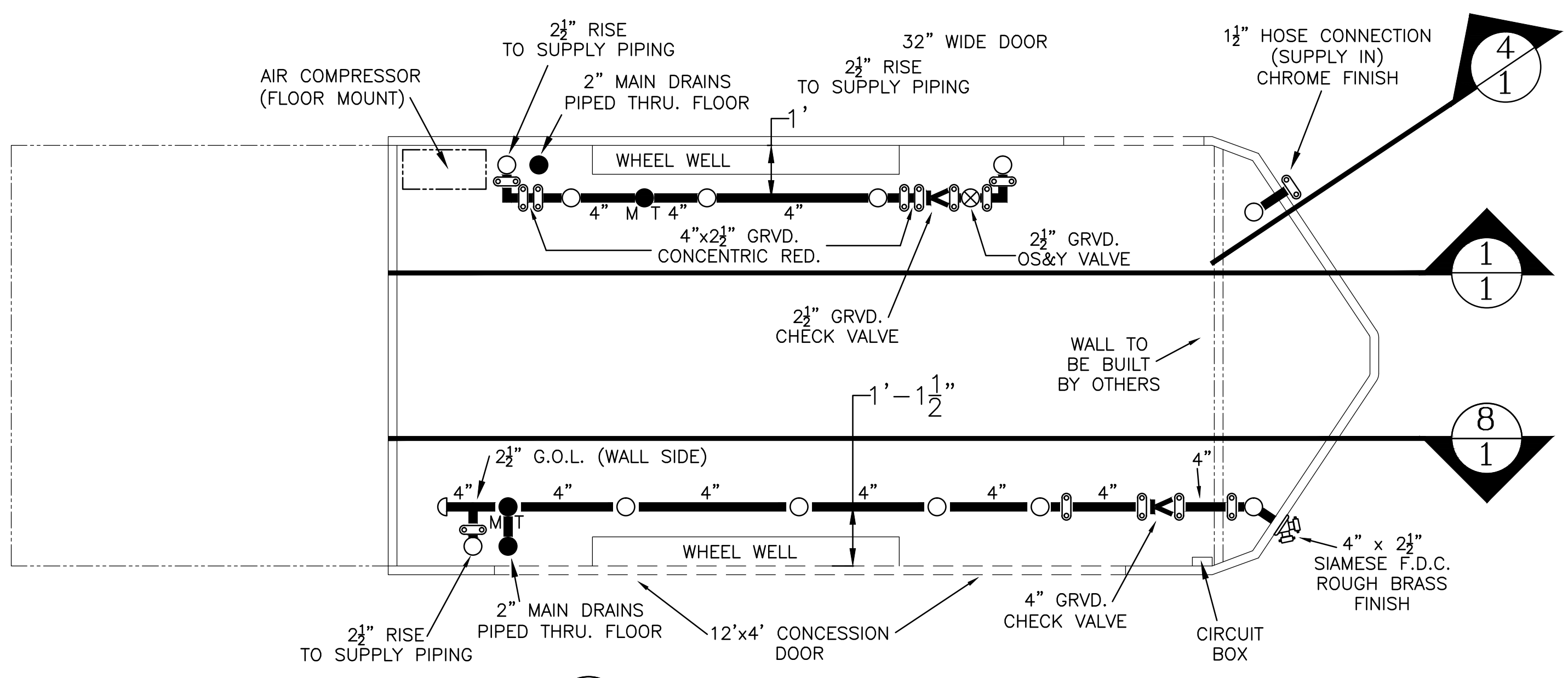
3 COLLECTOR PIPING CONNECTION DETAIL
3/4" = 1'-0"



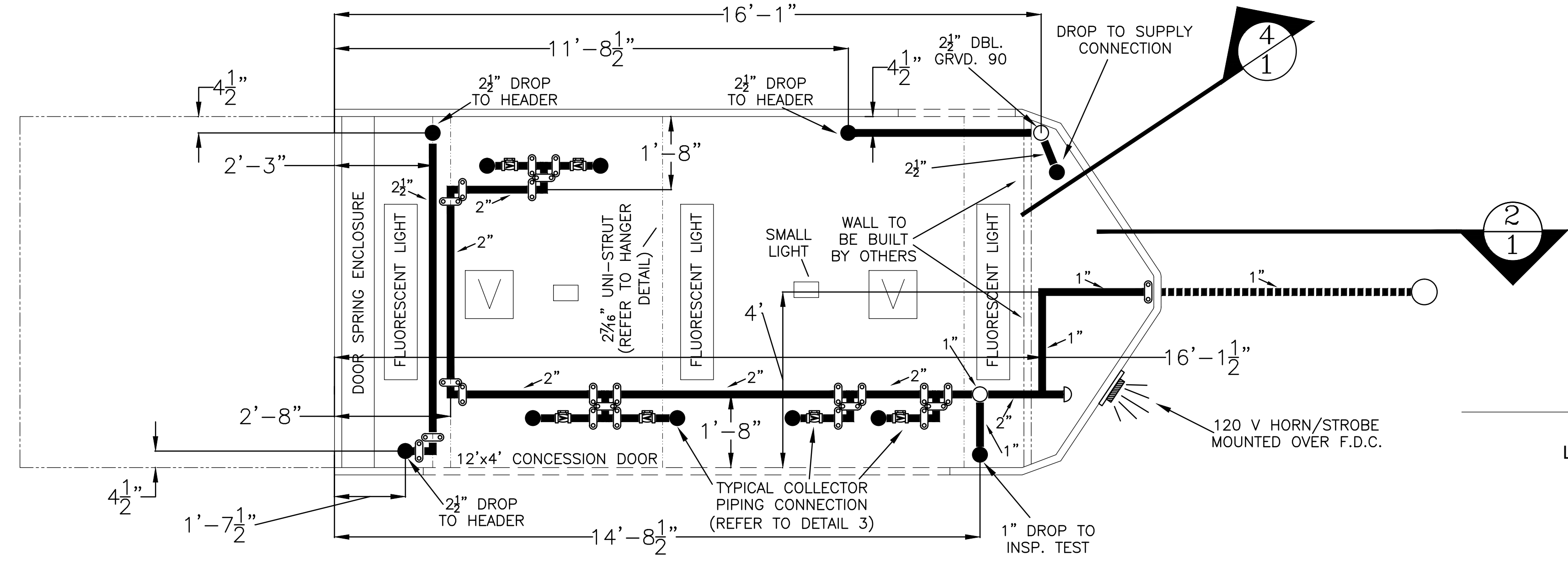
4 SUPPLY PIPING DETAIL
3/4" = 1'-0"



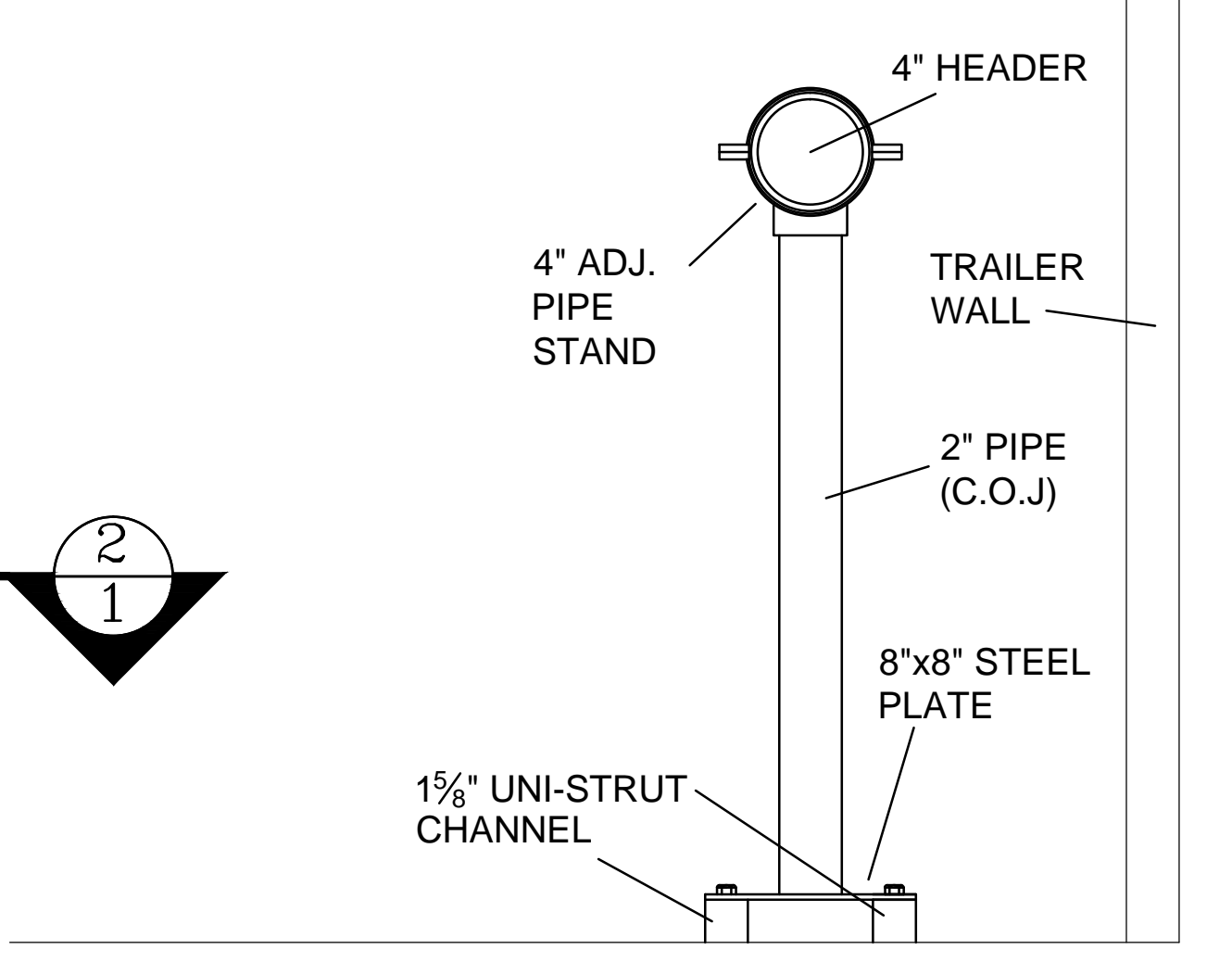
UNI-STRUT HANGER DETAIL
N.T.S.



5 SUPPLY/HEADER PIPING PLAN
1/2" = 1'-0"

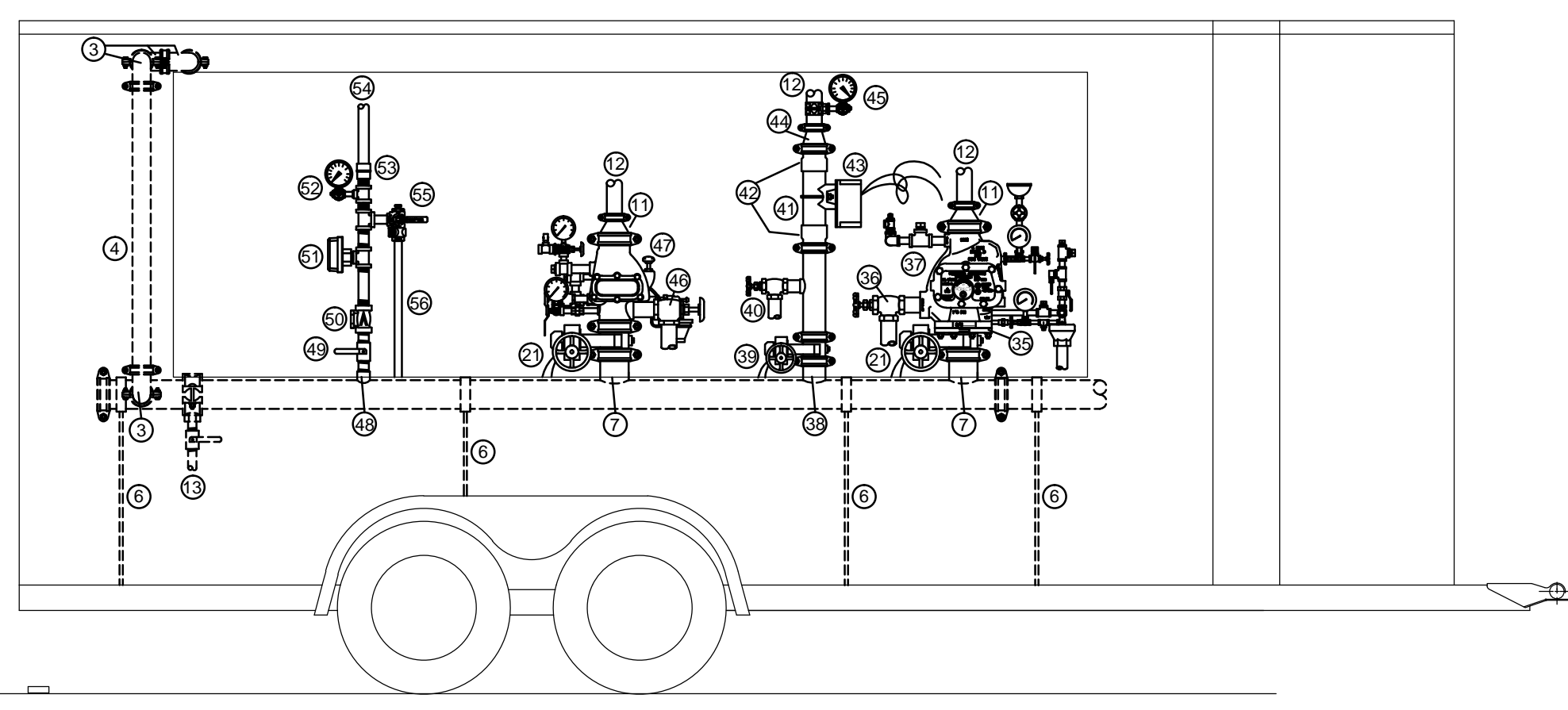


6 CEILING PIPING PLAN
1/2" = 1'-0"



HEADER SUPPORT DETAIL
N.T.S.

MASTER COMPONENT INDEX



7 EXTERIOR PASSENGER SIDE ELEVATION
1/2" = 1'-0"

- | | | | |
|---|---|--|--|
| <ul style="list-style-type: none"> ① FIRE ALARM CONTROL PANEL ② AIR COMPRESSOR (GAST 1LAA-46T-M100GX OR EQ.) ③ 2 1/2" GRVD. 90 ELL ④ 2 1/2" SCH. 10 VERTICAL PIPING (C.O.J.) ⑤ 4" x 2 1/2" GRVD. CONCENTRIC REDUCER ⑥ PIPE STAND ⑦ 4" GRVD. OUTLET ⑧ 4" GRVD. VIKING BUTTERFLY VALVE w/TAMPER SWITCH ⑨ 2" PRE-ACTION MAIN DRAIN (PIPE TO COMMON OUTLET) ⑩ 4" VIKING G-4000P DBL. PRE-ACTION VALVE w/FACTORY TRIM ⑪ 4" x 2" GRVD. CONCENTRIC REDUCER ⑫ 2" SUPPLY TO COLLECTOR PIPING ⑬ 4" x 1" MECH. TEE w/1" AUX. DRAIN ⑭ 2" DELUGE MAIN DRAIN (PIPE TO COMMON OUTLET) ⑮ 4" VICTAULIC SERIES 789 DELUGE VALVE w/FACTORY TRIM ⑯ 4" GRVD. VICTAULIC BUTTERFLY VALVE w/TAMPER SWITCH ⑰ 4" SCHEDULE 10 HEADER PIPE ⑱ 1 1/2" CLASS II STANDPIPE HOSE VALVE AND RACK w/HOSE ⑲ 1/2" THRD. THREE WAY VALVE w/GAUGE AND PLUG ⑳ 2 1/2" CLASS I STANDPIPE HOSE VALVE w/CAP & CHAIN | <ul style="list-style-type: none"> ㉑ 4" GRVD. BUTTERFLY VALVE (NIBCO OR KENNEDY) w/TAMPER SWITCH ㉒ 4" GRVD. OUTLET (SEE SPEC. SECTION 1.5 PART E) ㉓ 2 1/2" GRVD. TYCO CV-1 CHECK VALVE w/ 1/2" BALL DRIP ㉔ 2 1/2" GRVD. WATKINS GV-48 OS&Y VALVE ㉕ 2 1/2" SCH. 10 PIPING FROM SUPPLY CONNECTION ㉖ 4" THRD. SCH. 40 GALVANIZED PIPE TO F.D.C. (C.O.J.) ㉗ 4" THRD. 90 ELL ㉘ 4" TxG SCH. 40 SPOOL PIPE (C.O.J.) ㉙ 4" GRVD. DRAIN 90 ㉚ 1/2" THRD. TEE w/ 1/2" BALL DRIP AND 1/2" AUX. DRAIN ㉛ 4" SCH. 10 SPOOL PIPE (C.O.J.) ㉜ 4" GRVD. RELIABLE MODEL G CHECK VALVE w/ 1/2" BALL DRIP ㉝ 1" AGF MODEL 3011ASG INSPECTORS TEST w/SIGHT GLASS AND RELIEF VALVE ㉞ 1" SUPPLY TO INSPECTORS TEST FROM COLLECTOR PIPING SYSTEM ㉟ 4" FLANGE/GROOVE ADAPTER ㊱ 2" DRY VALVE #1 MAIN DRAIN (PIPE TO COMMON OUTLET) ㊲ 4" RELIABLE MODEL D DRY VALVE w/FACTORY TRIM ㊳ 3" GRVD. OUTLET ㊴ 3" GRVD. BUTTERFLY VALVE (NIBCO OR KENNEDY) w/TAMPER SWITCH ㊵ 1 1/2" WET RISER MAIN DRAIN (PIPE TO COMMON OUTLET) | <ul style="list-style-type: none"> ㊶ 3" HARVEL CLEAR PVC PIPE (SEE SPEC. SECTION 1.5 PART A & 2.2) ㊷ 3" SPEARS CPVC GRVD. BY SLIP ADAPTER (SEE SPEC. SECTION 1.5A) ㊸ 3" FLOW SWITCH (POTTER VSR OR EQ.) ㊹ 3" x 2" GRVD. CONCENTRIC REDUCER ㊺ 1/2" THRD. THREE WAY VALVE w/GAUGE AND PLUG ㊻ 2" DRY VALVE #2 MAIN DRAIN (PIPE TO COMMON OUTLET) ㊼ 4" TYCO DPV-1 DRY VALVE w/FACTORY TRIM AND VIZOR E.D.P.A. ㊽ 1 1/2" THRD. OUTLET ㊾ 1 1/2" THRD. BUTTERBALL VALVE ㊿ 1 1/2" THRD. CHECK VALVE ① 1 1/2" VANE FLOW SWITCH (POTTER VSR-S OR EQ.) ② 1 1/2" x 1" THRD. TEE w/ 1/2" THRD. THREE WAY VALVE w/GAUGE AND PLUG ③ 1 1/2" CPVC THRD. BY SLIP ADAPTER ④ 1 1/2" CPVC PIPING TO COLLECTOR SYSTEM ⑤ 1" AGF 1000 TEST-N-DRAIN ⑥ 1" RESIDENTIAL RISER MAIN DRAIN (PIPE TO COMMON OUTLET) ⑦ 1" SUPPLY FROM COLLECTOR PIPING SYSTEM ⑧ 1" THRD. BALL VALVE ⑨ 1" THRD. GALVANIZED NIPPLE ⑩ 1" THRD. GALVANIZED NIPPLE ⑪ 1" SHORT EAR RISER CLAMP SECURED TO WALL TO PREVENT MOVEMENT | <ul style="list-style-type: none"> ⑫ 1" GALVANIZED WALL PLATE ⑬ 1" THRD. GALVANIZED COUPLING ⑭ 1" x 6'-0" GALVANIZED PIPING w/1" x 1/2" THRD. 90 ⑮ 2" SUPPLY FROM A VALVE ASSEMBLY ⑯ 2" THRD. 90 ⑰ 2" THRD. CHECK VALVE ⑱ 2" SPOOL PIPING (TxT or TxG C.O.J.) ⑲ 2" GRVD. TEE ⑳ 1 1/2" NST HOSE CONNECTION w/CHROME FINISH ㉑ 1 1/2" GALVANIZED WALL PLATE ㉒ 1 1/2" THRD. GALVANIZED NIPPLE ㉓ 1 1/2" THRD. 90 ㉔ 1 1/2" TxG SCH. 40 VERTICAL PIPING (C.O.J.) ㉕ 2 1/2" x 1 1/2" GRVD. CONCENTRIC REDUCER ㉖ WALL (TO BE BUILT BY OTHERS) |
|---|---|--|--|

GENERAL NOTES

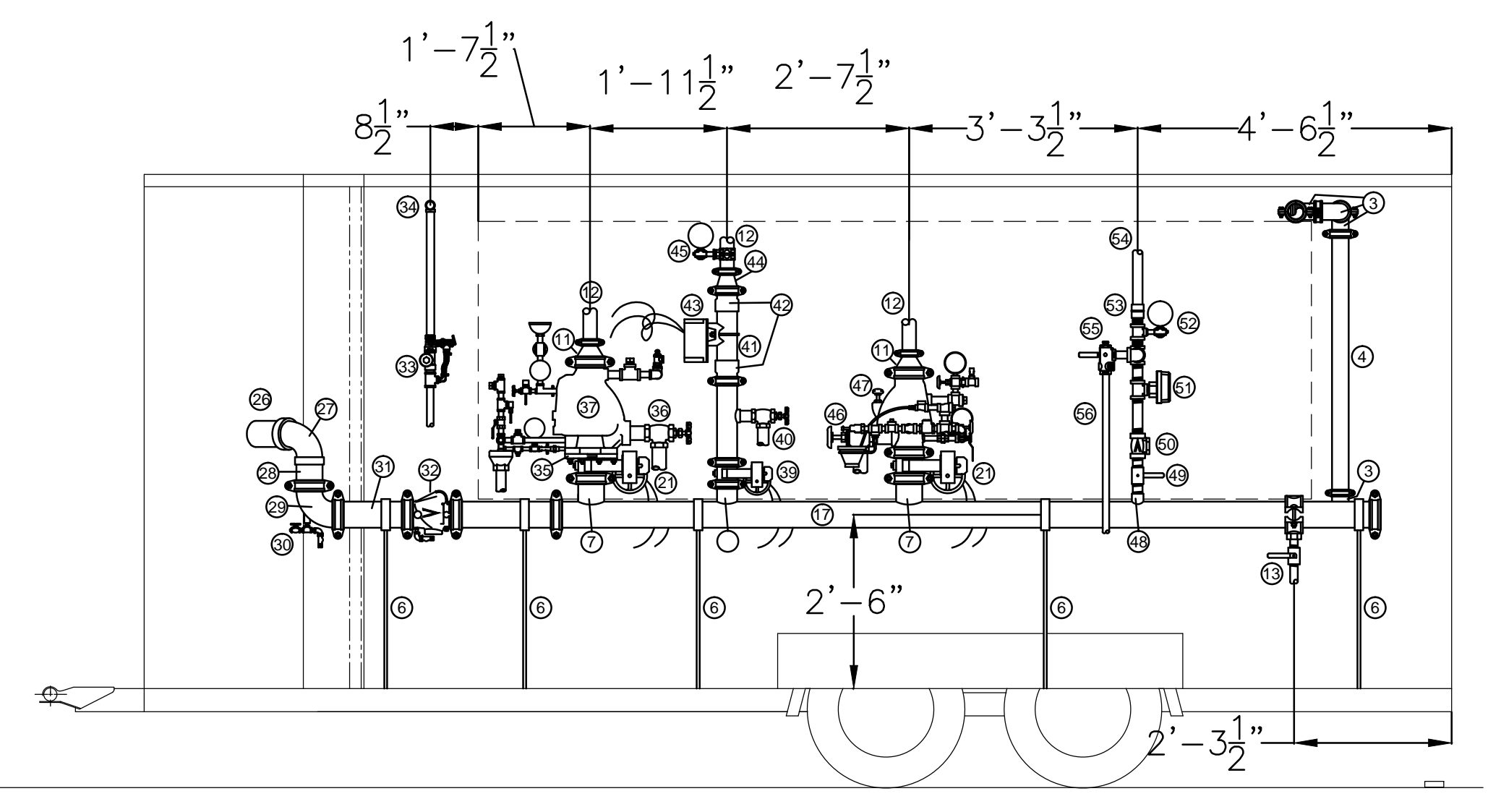
INSTALLATION TO BE IN ACCORDANCE WITH NFPA 13 (2002 ED.), NFPA 14 (2003 ED.), 2007 MSFC AND PROJECT SPECIFICATION CONTRACTOR TO OBTAIN APPROVAL FROM SFMD STAFF REGARDING ANY MATERIAL OR PRODUCT SUBSTITUTIONS CONTRACTOR TO FIELD VERIFY ALL DIMENSIONS SHOWN ALL DIMENSIONS SHOWN ARE CENTER TO CENTER U.N.O. ALL PIPE UP TO 2" IN DIAMETER TO BE BLACK THREADED SCHEDULE 40 U.N.O. AND PAINTED PER PROJECT SPECIFICATION ALL PIPE OVER 2 1/2" IN DIAMETER TO BE BLACK GROOVED SCHEDULE 10 U.N.O. AND PAINTED PER PROJECT SPECIFICATION ALL PIPING TO BE HUNG AND BRACED WALL OR FLOOR TO PREVENT HORIZONTAL AND VERTICAL MOVEMENT ALL GROOVED COUPLINGS TO BE RIGID TYPE WITH TRI-SEAL GASKETS ALL AIRLINES TO BE 1/2" THRD STEEL WITH 24" RATED 1/2" I.D. HOSE AT COMPRESSOR

REVISIONS		
#	DATE	DESCRIPTION
1	3/2/12	BID PLAN



444 Cedar Street Ste. 145
Saint Paul, MN 55101

TITLE: AUTOMATIC FIRE PROTECTION TRAILER
SCALE: 1/2" = 1'-0" U.N.O.
PAGE: 1 OF 1
DRAWN BY: DRF
FILE: SFMD_SPRINK_TRL_5-2-11.dwg



8 INTERIOR PASSENGER SIDE ELEVATION
1/2" = 1'-0"