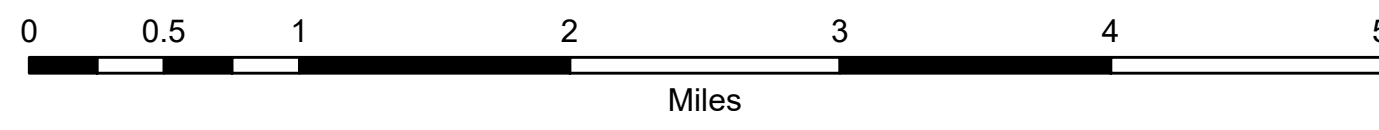
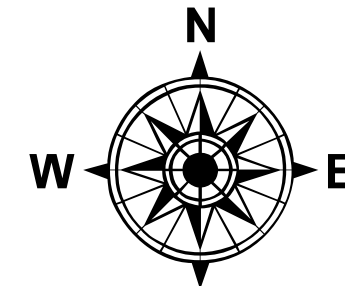
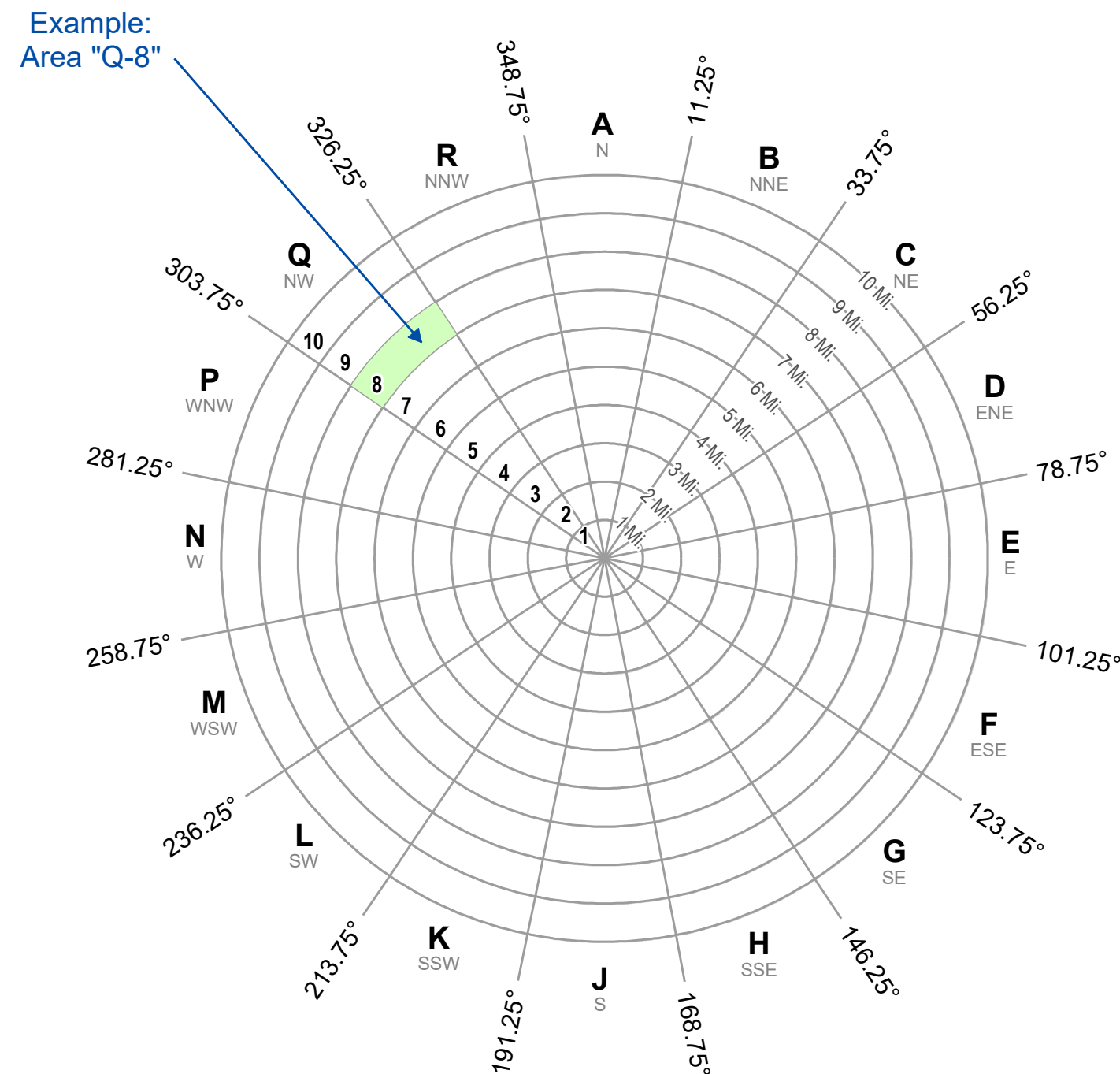


Monticello Nuclear Generating Plant Radiological Sampling Sites

January, 2024



- ★ Monticello Nuclear Generating Plant
- Radiological Sample Site
- Emergency Worker Decon Site
- Ⓜ Emergency Operations Center
- Ⓜ Dispatch Center
- Northstar Commuter Rail Station
- Sector Line
- Northstar Commuter Rail
- Sub-Area



Sub-Area	Residents: Sherburne Co	Residents: Wright Co	Transients	Employees	Total Population
2	3,141	100	186	0	3,427
5N	9,657	0	480	186	10,323
5E	19,760	0	34	0	19,794
5S	0	15,339	430	190	15,959
5W	0	2,777	711	0	3,488
10N	699	0	0	0	699
10E	2,979	0	204	0	3,183
10SE	0	3,978	155	0	4,133
10S	0	8,109	0	0	8,109
10SW	0	3,955	0	0	3,955
10W	0	3,789	138	0	3,927
10NW	1,196	0	178	0	1,374
TOTALS	75,379	2,430	562	0	78,371

Population estimates are from the Evacuation Time Estimate Study for the Monticello Nuclear Generating Plant EPZ, 2022 (Based on 2020 Census data). Additional information is available in this report.

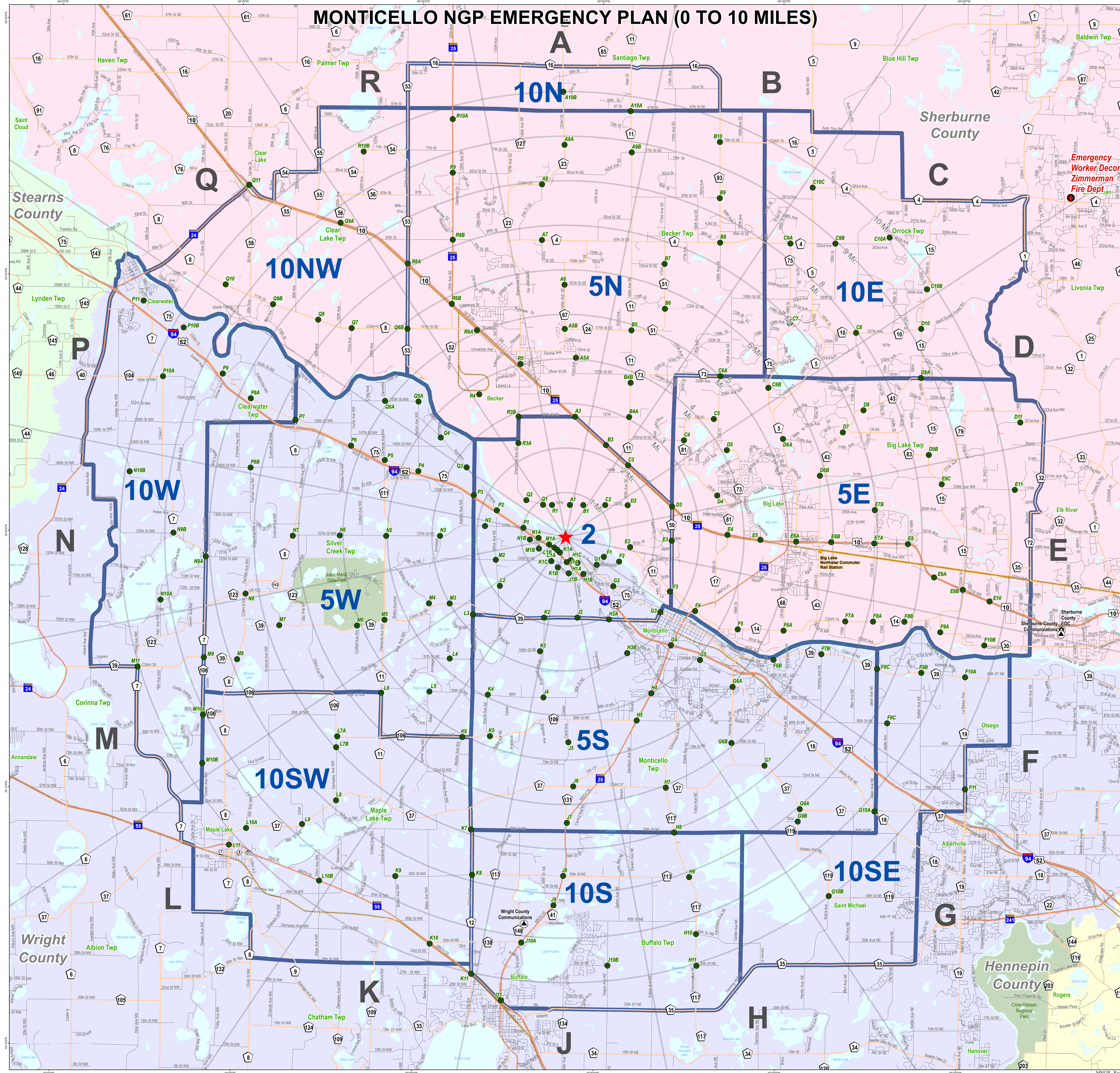
*The population at the Wright County Jail is included in the U.S. Census permanent resident population. For the purposes of this table, those 155 inmates are included with the Special Facility population.



Minnesota Department of Public Safety
Division of Homeland Security and Emergency Management

The map and information depicted on this page represents information pertaining to the area around the Monticello Nuclear Generating Plant. This map is produced as a tool to assist employees in the performance of their jobs. Your personal safety is provided for by using safety practices, procedures and equipment as described in safety training programs, manuals and Protective Action Recommendations.

Map File: M_RadiologicalSamplingSites.mxd
Map Scale: 0.75" = 1 Mile
UTM15N Meters NAD83



Emergency Worker Decon
Zimmerman
Fire Dept

MNGP - Rad